

February 15, 2017

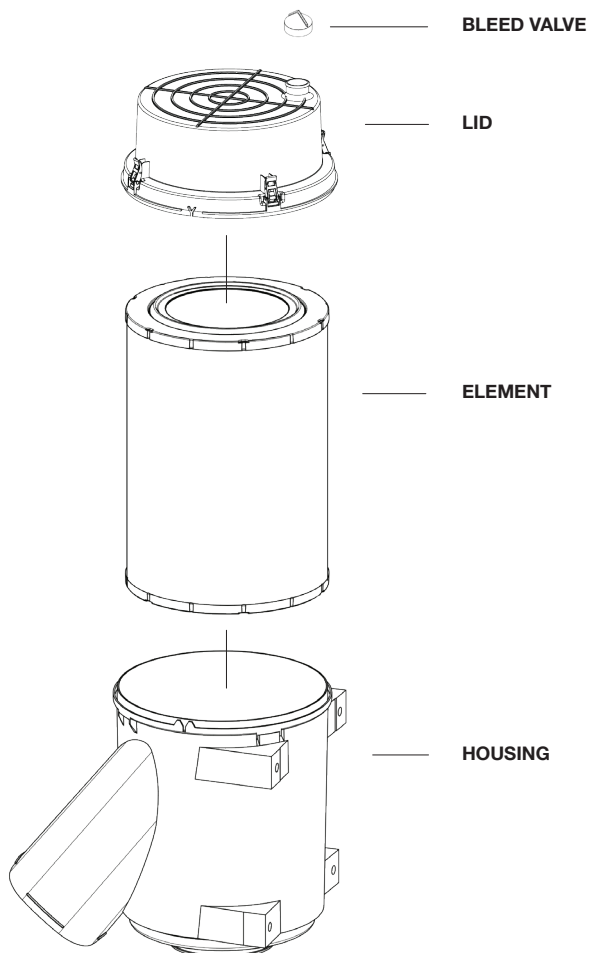
Installation Instructions for RS30143 and RS30143 KIT

Baldwin Filters recently introduced the RS30143 Radial Seal air element and RS30143 KIT (which includes the air element and a plastic housing lid). The RS30143 and RS30143 KIT are replacements for the RS5671.

The RS30143 is not compatible with the OE or other aftermarket housing lids and must be used with the Baldwin housing lid only (included in the RS30143 KIT). For the initial installation only, you will need to purchase the RS30143 KIT.

Please note: You must remove the bleed valve from the OE housing lid and attach it to the new Baldwin housing lid before installing. The OE air element will work with the new Baldwin housing lid, therefore you will no longer need the OE housing lid.

The RS30143 has been thoroughly tested to verify that we are providing our customers with a premium aftermarket replacement to the original equipment filter.



Following the Steps Below:

1. Remove the lid from the housing.
2. Detach the bleed valve from the lid and attach to the new Baldwin lid (included in the RS30143 KIT).*
3. Remove the old element from the housing.
4. Install the Baldwin RS30143 element in the housing.
5. Install the new Baldwin lid.

* Once the Baldwin lid is installed, you will no longer need the OE lid.

PLEASE NOTE:

The Baldwin element will not work in the housing with the OE lid. The element must be used with the Baldwin lid only.

The OE element will work with the Baldwin lid.

If you have further questions, please call our Service Engineering Team at (308) 237-9729.



WARNING: These products can expose you to chemicals, including Diisononyl Phthalate, Carbon black extracts, Nickel, 1,3 Butadiene, Ethylene Oxide, Epichlorohydrin, which are known to the State of California to cause cancer, and Bisphenol-A, Ethylene Glycol, Ethylene Oxide, 1,3 Butadiene, Epichlorohydrin, which are known to the State of California to cause birth defects or other reproductive harm. For more information go to www.P65Warnings.ca.gov.