

Fulflo® WH Multi-Cartridge Filter Vessel

304 and 316 stainless steel filter vessel
(non ASME code)

The WH cartridge filter vessels are a lightweight, economical, Non-ASME industrial / commercial design suitable for a wide variety of filtration applications. The 100% stainless steel and passivated finish provides superior corrosion resistance and an excellent appearance. The swing type closure bolts and hinged cover design (up to 35 round) make cartridge change-out quick and easy.



Contact Information

Parker Hannifin Corporation
Industrial Process Filtration - N.A.
118 Washington Avenue
Mineral Wells, TX 76067

phone +1 940 325 2575
industrialprocess.na@parker.com

www.parker.com/industrialprocess

Benefits

- Hinged cover (up to 35 round) and swing bolt closure for fast, easy cartridge change-out
- Maximum design pressure is 150psi (10.3bar) at 250°F (121°C) for use in a wide range of operating conditions
- 100% stainless steel for corrosion resistance. Bolting is zinc plated carbon steel
- Dual purpose cartridge seats for use with double open end & 2-222 O-ring single open end cartridges
- Standard finish is passivated
- 316 stainless steel cartridge seats, top seat plate assemblies, & tri-fold element guides for long term use
- Standard Buna-N O-ring with optional fluoroelastomer and EPR for wide range of applications
- Standard features include vent, clean drain & dirty drain connections

Applications

- Potable Water
- Process Water
- Edible Oils
- Beverages
- Chemicals
- Solvents
- Pre-Reverse Osmosis



ENGINEERING YOUR SUCCESS.

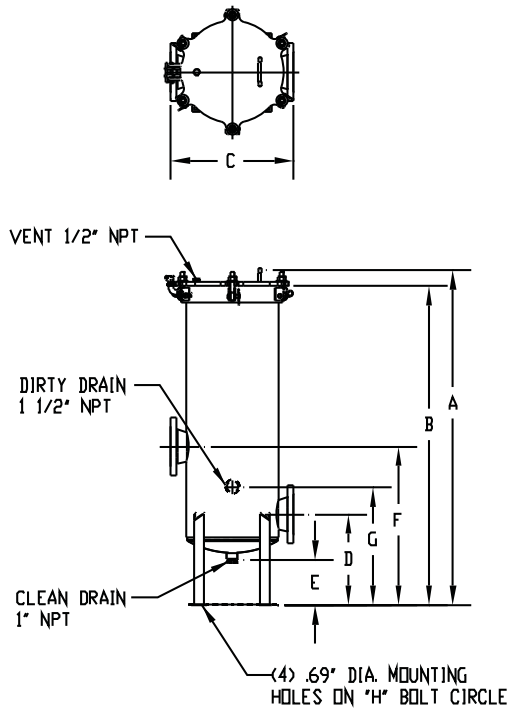
Fulflo® WH Filter Vessels

Design Specifications

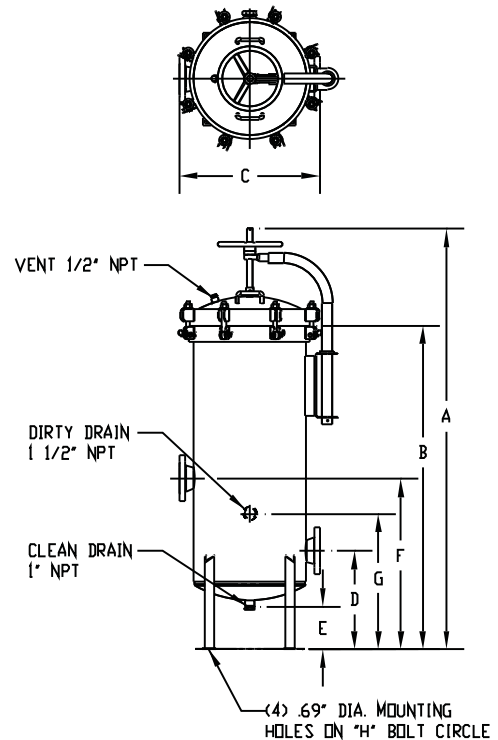
Model *Material of Construction (G or S)	Cartridges		Typical Flow† (gpm)	Dimensions (in.)								Shipping Weight (lbs)
	Qty.	Length (in.)		A	B	C	D	E	F	G	H	
WH*4S1.5T	4	10	28	22.56	19.56	10.06	5.25	3.00	10.75	8.25	9.63	55
WH*4D2T	4	20	56	32.63	29.63	10.38	5.25	3.00	10.75	8.25	9.63	60
WH*4T2T	4	30	84	46.69	39.69	10.38	5.25	3.00	10.75	8.25	9.63	65
WH*4Q2T	4	40	112	56.75	49.75	10.38	5.25	3.00	10.75	8.25	9.63	70
WH*9T3F	9	30	189	51.94	49.38	15.49	14.00	5.75	21.50	18.25	10.46	165
WH*9Q3F	9	40	252	62.00	59.44	15.49	14.00	5.75	21.50	18.25	10.46	180
WH*12T3F	12	30	252	51.94	49.38	16.80	14.00	7.29	21.50	18.25	11.72	175
WH*12Q3F	12	40	336	62.00	59.44	16.80	14.00	7.29	21.50	18.25	11.72	195
WH*16T4F	16	30	336	52.06	49.38	19.05	14.00	7.02	24.50	18.25	13.74	235
WH*16Q4F	16	40	448	62.13	59.44	19.05	14.00	7.02	24.50	18.25	13.74	150
WH*21T4F	21	30	441	52.06	49.38	21.30	14.00	6.29	24.50	18.25	15.76	165
WH*21Q4F	21	40	588	62.13	59.44	21.30	14.00	6.29	24.50	18.25	15.76	185
WH*29T6F	29	30	609	68.35	52.56	23.52	16.00	6.93	27.75	22.00	17.80	395
WH*29Q6F	29	40	812	78.41	62.63	23.52	16.00	6.93	27.75	22.00	17.80	420
WH*35T6F	35	30	735	68.62	52.56	25.52	16.00	6.26	27.75	22.00	19.81	445
WH*35Q6F	35	40	980	78.68	62.63	25.52	16.00	6.26	27.75	22.00	19.81	470

†Actual flow rate is dependent on fluid viscosity, micron rating, contaminant and media type. Consult flow charts for each application. Flow rates shown do not consider inlet velocity limitations.

WH4 | WH9 | WH12 | WH16 | WH21



WH29 | WH35



Specifications are subject to change without notification.
For User Responsibility Statement, see www.parker.com/safety

© 2017 Parker-Hannifin Corporation
Industrial Process Filtration - North America
All Rights Reserved



Fulflo® WH Filter Vessels

Material of Construction	Max. Allowable Pressure (MAP) (psi @ MAT °F)	Max. Allowable Temp. (MAT) (°F @ MAP psi)
304 Stainless	150psi (10.3bar)	250°F (121°C)*
316 Stainless		

*Limited to 250°F by the standard Buna-N O-ring

Optional Shell O-Ring/Gasket*			
Model	Part #		
	Buna-N	Viton®	EPDM
4 round	4150-5706	4150-5707	4150-5708
9 round	4150-5702	4150-5703	4150-5704
12 round	4150-5680	4150-5700	4150-5689
16 round	4150-5681	4150-5701	4150-5690
21 round	4150-5612	4150-5686	4150-5691
29 round	4150-5682	4150-5687	4150-5692
35 round	4150-5683	4150-5688	4150-5693

*Optional O-ring shipped separately

Ordering Information

Design Series	Material of Construction		Cartridge Qty.	Cartridge Length		Inlet Outlet		Inlet Outlet Type		Finish	
	Code	Description		Code	Inches	Code	Inches	Code	Description	CODE	DESCRIPTION
WH	G	304 SS	4	S	10	1.5	1.5	F	ANSI 150lb RFSO Flange	P	Passivated
	S	316L SS	9	D	20	2	2	T	FNPT		
			12	T	30	3	3				
			16	Q	40	4	4				
			21			6	6				
			29								
			35								

Specifications are subject to change without notification.
For User Responsibility Statement, see www.parker.com/safety

© 2017 Parker-Hannifin Corporation
Industrial Process Filtration - North America
All Rights Reserved
Fulflo is a registered trademark of Parker-Hannifin Corporation

